

## Differentiators for Selecting The Arnold Air Force Base Site Rather than Lawrence County



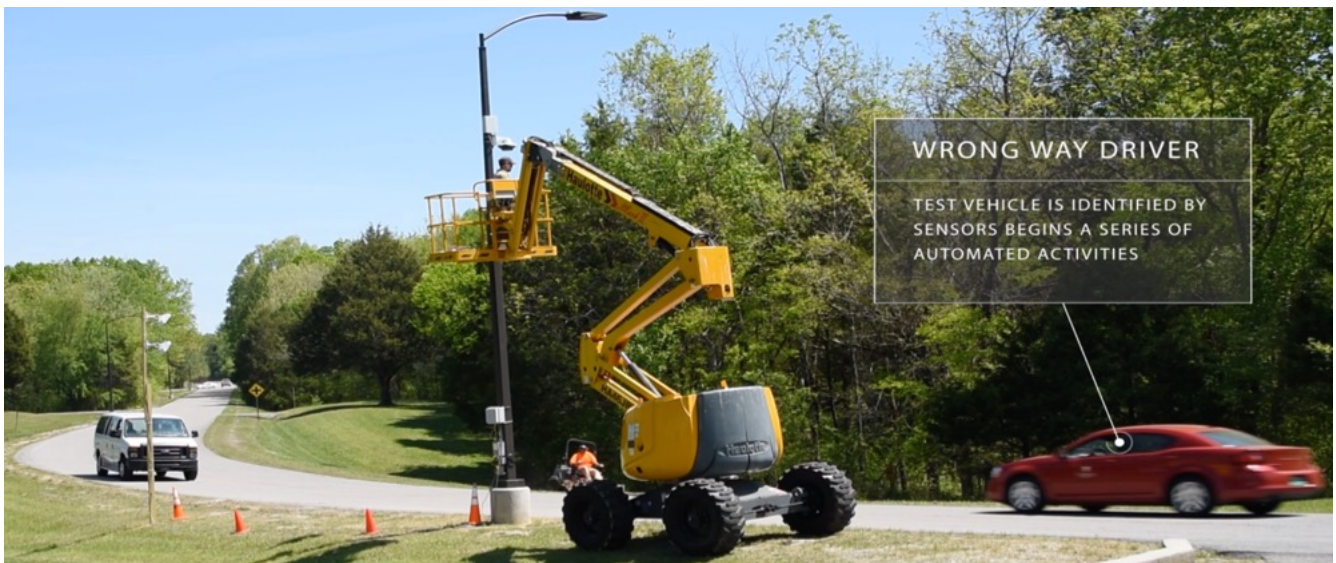
1) The state will leverage substantial extant infrastructure (estimated \$70M value of “buffer land” on the Air Force Base over 5 miles from AEDC) where Smart Mobility testing is already in progress.

2) With modest initial seed investment, expanded transportation research and testing on a controlled proving ground can begin immediately, while cost sharing from revenue reinvestment will accelerate the full development of the test complex.

3) Tennessee has invested billions of dollars in collective state universities and colleges. The intellectual weight of our universities is a force multiplier for the state. As an example, Spanish auto R&D company IDIADA began as a research center of the University of Caledonia and is still 20% owned by the University. Deep identification with the Tennessee’s universities is key to the success of the state’s transportation industry transformation.



**Figure 1.** Vanderbilt’s frame integrity structural test fixture.



**Figure 2.** UTSI and Stantec Design conducted an Edge Computing Environment Wrong Way Driver Detection Test on campus April 24<sup>th</sup>, 2019 with 42 unique data runs.